



(OLD CONCEPT) VIEW LOOKING NORTH WEST

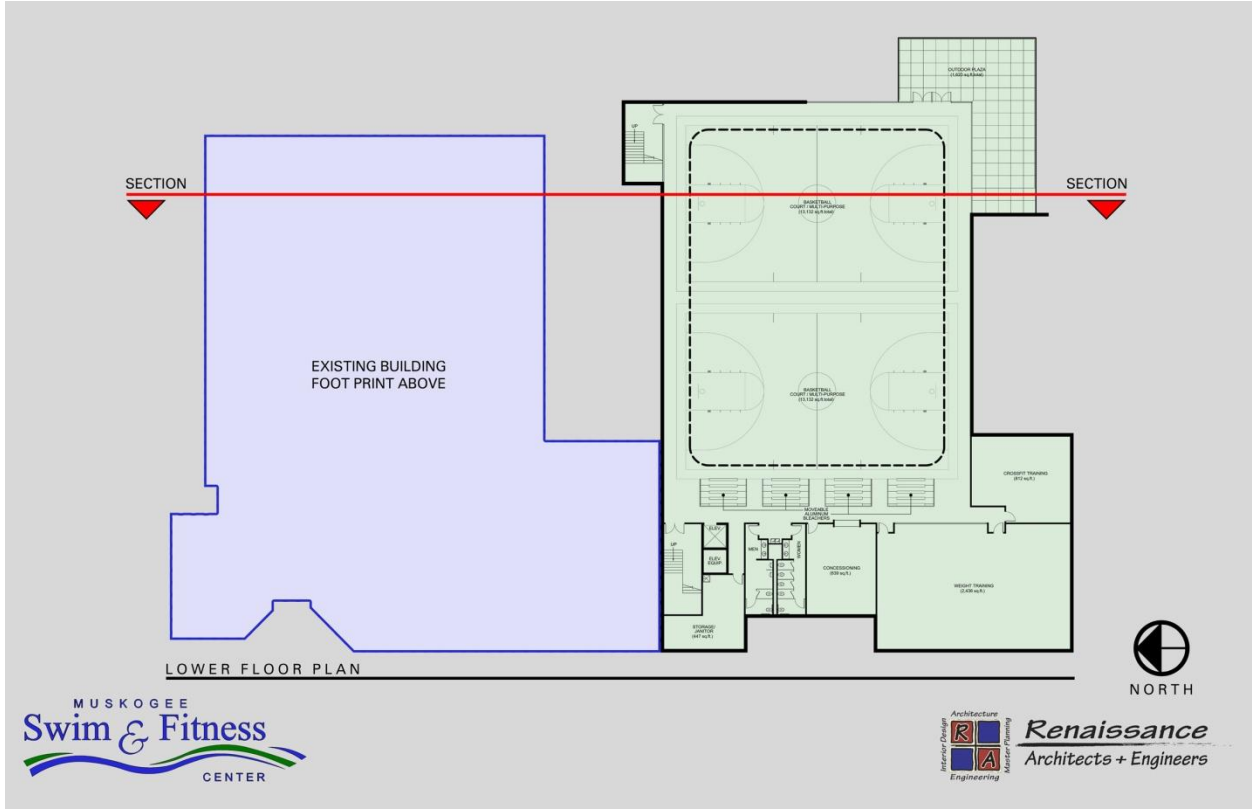
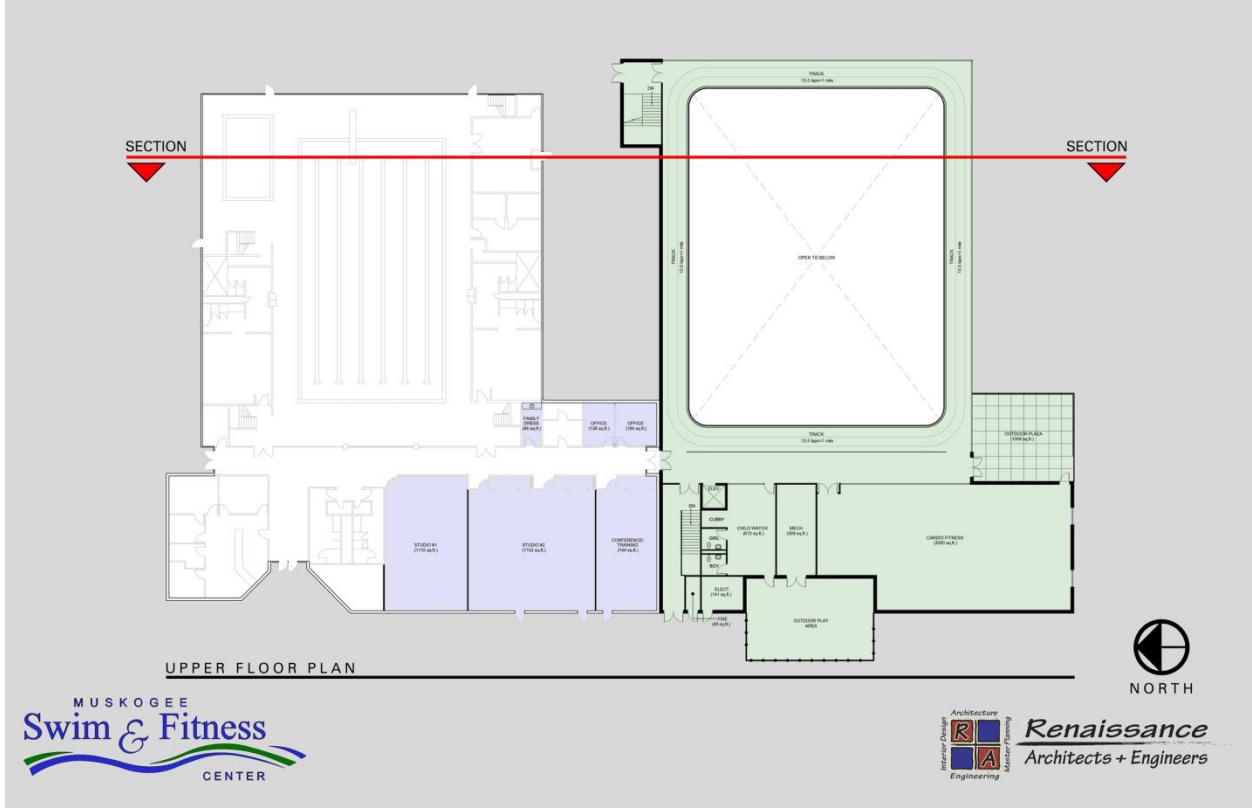


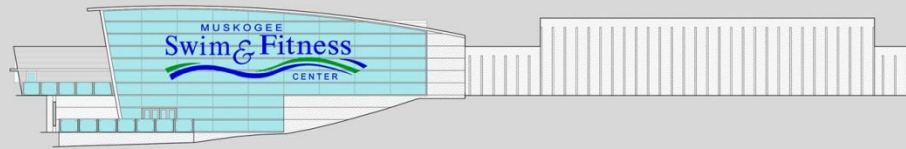
MUSKOGEE Swim & Fitness CENTER

MUSKOGEE SWIM & FITNESS CENTER PHASE 2 PRESENTATION (10/07/2013)

EXISTING FLOOR PLAN	20,530 S.F.
RENOVATION	3,419 S.F.
(NEW) UPPER FLOOR PLAN	19,342 S.F.
(NEW) LOWER FLOOR PLAN	9,762 S.F.



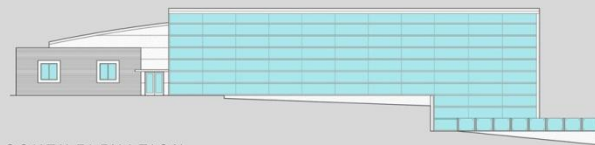




EAST ELEVATION



WEST ELEVATION



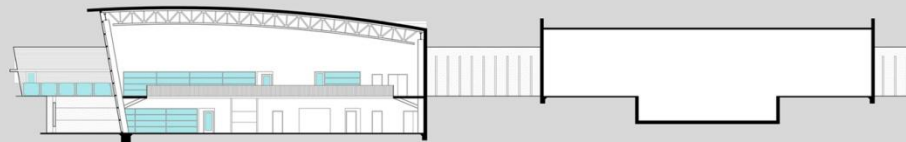
SOUTH ELEVATION



Renaissance
Architects + Engineers



VIEW LOOKING NORTH WEST



SECTION LOOKING WEST



Renaissance
Architects + Engineers